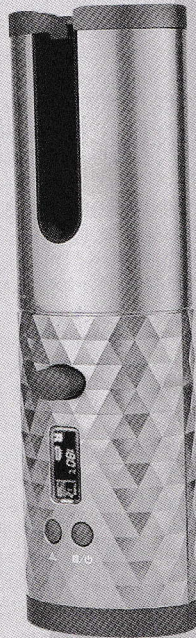


**Instruction Booklet**  
**使用说明**



**Wireless Rechargeable**  
**Auto Hair Curler**  
充电式无线  
自动卷发器



# WIRELESS RECHARGEABLE AUTO HAIR CURLER

## IMPORTANT SAFETY INSTRUCTIONS

When using electrical appliances, especially when children are present, basic safety precautions should always be followed, including the following:

### READ ALL INSTRUCTIONS BEFORE USING KEEP AWAY FROM WATER

#### SAFETY PRECAUTIONS

**WARNING:** The polyethylene bags over the product or its packaging may be dangerous. Keep these bags out of the reach of babies and children.

Never use them in cribs, children's beds, pushchairs or playpens. The thin film may cling to the nose and mouth and prevent breathing. A bag is not a toy.



**WARNING:** Do not use this appliance near bathtubs, showers, basins or other vessels containing water.

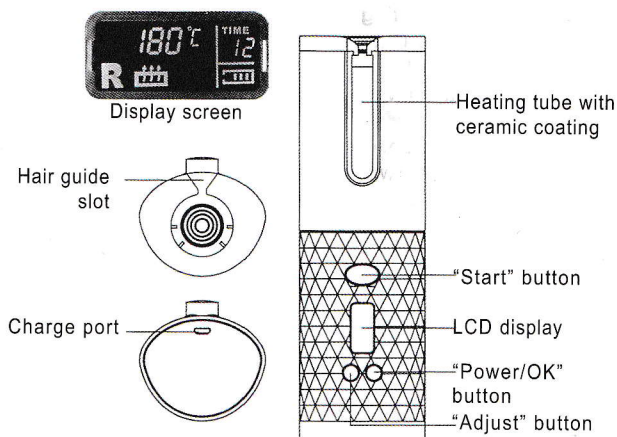


The above symbol means "Not to be used in bath or shower"

1. The product has an electric heating function, so it is not suitable for people (including children) with mental disorders, no awareness of safe behavior or physical and cognitive disabilities, unless he/she uses the product under the supervision or guidance by his/her guardian.
2. This product has an electric heating function, so it should be kept out of reach of children when not in use, and children should be prevented from touching and playing it during using and cooling of it.
3. The plastic packing bag of the product should be placed out of reach of infants and children.
4. This product is non-watertight, so do not use it in the bathroom or other humid environment where water may easily enter.
5. When liquid enters into the product, it shall be sent to the manufacturer's maintenance department or professional maintenance personnel for repair.
6. Please use the product for the specified purpose.
7. Please charge the product with a charger produced by a qualified manufacturer that can provide the rated charging voltage and current.
8. Please charge the product with a charging cable produced by a qualified manufacturer that can withstand a charging current of 2A or above.
9. Do not use the product near flammable or explosive materials, as this may result in fire or explosion.
10. When the product is being charged, do not leave it unattended, and remove the charger immediately after it is completed charged.
11. Do not remove the charger by pulling the charging cable.
12. Never use accessories or parts manufactured by other manufacturers that are not recommended by the manufacturer of the product. If the product is damaged by such accessories or parts, the Company does not provide warranty service.

13. Do not place the product on surfaces that cannot be heated during use or cooling.
14. Try to avoid direct contact with the hot surface of the product, especially for eyes, ears, face and neck.
15. Do not insert metal objects into the product to avoid electric shock.
16. Do not wrap the charging cable around the product after use, which may damage the charging cable.
17. Make sure the product is sufficiently cooled before storing it away.
18. Apply the product to the hair at right temperature and within appropriate duration, as excessive temperature and duration may cause hair damage.
19. When using the product for the first time, there may be a slight burnt smell or a little smoke, which is caused by the heated grease inside the rotating mechanism, and will disappear after a period of time. This is normal, so please rest assured to use it.
20. The heating rate varies according to the battery status.
21. When the product is in use, if the temperature symbol on the screen flashes "E", the temperature sensing probe fails. The product should be sent to the manufacturer's maintenance department or a qualified professional maintenance agency for repair.

## SAVE THESE INSTRUCTIONS PRODUCT DIAGRAM



## PARAMETERS

- Product name: Rechargeable Automatic Hair Curler
- Charging voltage/current: DC 5V 1500mA
- Battery voltage: 3.7V
- Battery capacity: 5,200mAh

## PRODUCT CHARACTERISTICS

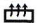
- Built-in lithium ion battery with high capacity, enabling wireless operating mode;
- New metal alloy heating film for fast heating;
- 19mm ceramic curling iron, making hair curled naturally;
- Three heat settings: 160°C, 180°C, and 200°C;
- Customized LCD screen for intelligent display;

- Intelligent temperature control and warm-up reminder;
- Insulation design to keep the heating tube out of reach and protect you from any scald risk;

## INSTRUCTIONS FOR USE

Before using, please fully charge the product to have the best experience;

Before using the product, please make sure you understand all precautions for use to get the best experience;

- **Start:** Press the "Power/OK" button for about 2 seconds in shut-down state. The buzzer beeps once and the display screen lights up. The display of temperature flashes and the product enters the 5-second temperature setting state by default. If no operation is done within 5 seconds, the current temperature will be used. After that, the "temperature setting" display keeps lightened, and the product will heat up.
- **Shutdown:** In the power-on state, press and hold the "Power/OK" button for about 2 seconds. The buzzer beeps once, the display screen goes out, and all functions is disabled (only the "Power/OK" button is available in the shutdown state by default).
- **Mode Setting:** When the product is in the mode setting, press the "Power/OK" button to switch the mode in the order of "Temperature Setting-Rotating direction-Retention time-Work"; when the product is in the mode setting, press the "Adjust" button to adjust the current set value as follows:
  - a. **Temperature setting:** It can be adjusted in the cycle of "160°C-180°C-200°C". Each time the "Adjust" button is pressed, the set value is changed once, and the display area of the temperature level flashes to show the current set value on the screen;
  - b. **Rotating direction:** It can be switched between clockwise rotation, counterclockwise rotation and mix mode rotation (it includes one clockwise rotation and one counterclockwise rotation). Each time the "Adjust" button is pressed, the direction is switched once, and the display area of the rotating direction flashes to show the current set value on the screen (L,R or MIX);
  - c. **Retention time:** It can be adjusted in the cycle of "06-08-10-12". Each time the "Adjust" button is pressed, the set value is changed once, and the display area of the retention time flashes to show the current set value on the screen;
- **Confirming Setting:** Wait for 5 seconds after setting. The display area of set value stop blinking, and the heating state symbol starts to flash, indicating that the setting is completed and the product enters the working mode.
- **Preheating & Temperature Rise:** When the heating state symbol "  " turns from flashing to lightened on the screen, it means that the product has been heated to the set temperature and been ready for subsequent operation.
- **Start Curling:**
  - ▲ First, take a proper amount of hair, smooth them out, and put the front part of hair completely into the hair chamber (put the side without the display screen of the product close to your face; align the top with the scalp; and the product opening is upward). Press and hold the "Start" button (press it to the bottom), and the motor drives the horn to start rotating and curling the hair.

**Note: Only after the hair has been smoothed out, the front part can be completely placed in the hair chamber. If the hair is knotted or the front part is not put into the hair chamber, the product may get stuck!**

- ▲ When the horn rotates about 8 cycles, the audio beeps of the retention time starts to sound.
- ▲ After the audio beeps reaches the set number of times, the buzzer beeps two times, indicating the time is up and the hair can be taken out;
- ▲ Repeat the above steps to achieve the desired effect;

## CHARGING INSTRUCTIONS

Before using, please fully charge the product to have the best experience.

If you intend not to use the product for a long time, please fully charge its battery at first and then charge once every three months to make the product in the best condition.

Due to the inherent characteristics of the lithium battery, it is a normal that the capacity decreases after repeated use.

- When the product is in the charging state, the display screen lights up and shows the battery indicator symbol, and the battery indicator flashes accordingly.
- When the product is fully charged and the charger is still connected, the display screen lights up and the battery indicator symbol is lightened for a long time.
- When the charging cable is unplugged, the display screen light off.
- When the charger is connected, other functions of the product is locked and cannot be turned on.

## PROTECTION AND ERROR WARNING

- **WARNING for Getting Stuck by Hair:** In the curling process, when the buzzer beeps continually, it means the system detects that the product gets stuck by hair, and the horn will automatically stop and return to the initial position. After you release the "Start" button, if the horn can return to the initial position, the product can continue to be used; otherwise the product will automatically shut down.
- **Low-power Protection:** If the battery level is detected to be lower than the set value when you use the product, the buzzer will sound long, indicating that the product is low in power; when the battery level is detected to be lower than the set value, in order to protect the battery from over-discharging, the screen will flash for three times and then turn black, and the product will automatically shut down.
- **Auto Shutdown:** In the power-on state, when no curling operation is detected within 14 minutes, the product will first beep for 1 minute. If there is still no curling operation, the product will automatically shut down and enter the sleep mode.
- **Sensor Failure:** In the power-on state, if the display area of the temperature symbol flashes "E" on the screen and the heating function fails, it indicates that the system detects the temperature sensor failure and the product should be repaired in time.



## CLEANING AND MAINTENANCE

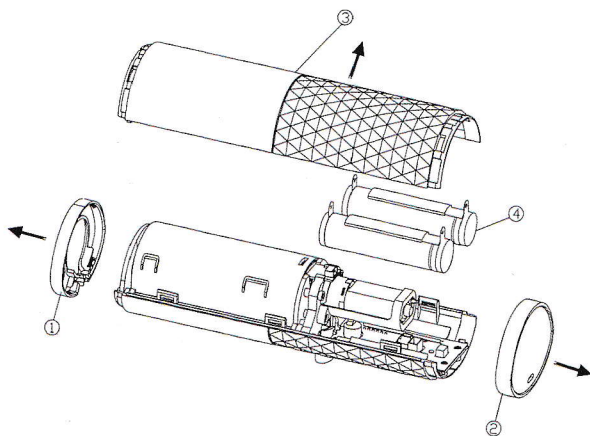
- Never clean the product in a dishwasher or a washing machine.
- This product is non-watertight. In cleaning process, care must be taken to prevent water or other liquid from entering the product from the gap or interface, otherwise short circuit or failure may be caused.
- Please clean up the hair, scurf and other matters left on the comb after each use.
- Please ensure that the product has been cooled before performing cleaning and maintenance.
- Never use sharp tools or any cleaner with corrosive or volatile diluent for cleaning.
- Clean and wipe the product with a soft wet cloth (dipping a small amount of non-irritating, non-volatile and non-flammable detergent) and dry it with a soft dry cloth.

## ENVIRONMENT

This appliance contains rechargeable battery. The built-in rechargeable battery contains substances that may be environmentally harmful. Please remove the battery before discarding your clipper.

- Unplug your appliance before removing battery.
- The battery is to be disposed of safely.
- Never replace the battery with others type of battery especial nonrechargeable batteries. This could cause fire or an electric shock.
- Never throw batteries away with the normal household waste, make sure batteries to be disposed at on official recycling centre or collection point.

Remove the battery as illustrated.



## LIMITED TWO YEAR WARRANTY

Appliances will repair or replace your appliance free of charge for 24 months from the date of purchase if the appliance is defective in workmanship or materials. This warranty is no longer valid in case of alteration or repair by any unauthorised persons. To obtain service under this warranty, please send in registration within one month of purchase through either one of the following ways.

## Warranty card

Dear customers,

Thank you for buying this product. This warranty card is an important certificate of warranty service. Please fill it out carefully. Thank you very much!

Within two years from the date of purchase, in normal use, as of the product. If there is any problem with quality or parts, we will provide free repair or replacement service for you. To obtain this warranty service, please fill in this product within one month after purchase A warranty card and return it with a copy of the purchase voucher.

## 请填写以下资料

Name: Mr./Miss/Ms. \_\_\_\_\_ Zip Code: \_\_\_\_\_

Address: \_\_\_\_\_

Tel: \_\_\_\_\_ Email: \_\_\_\_\_

Product Name: \_\_\_\_\_

Model No.: \_\_\_\_\_

Store of Purchase: \_\_\_\_\_

Purchase Date: \_\_\_\_\_

## 保修条款

- Your purchased products are manufactured to strict specifications, using unauthorized parts.
- Failure or damage caused by replacement or repair is not covered by this warranty.
- This warranty does not cover any damage caused by accident, misuse, transportation or non-routine domestic use. This warranty does not cover all accidental or indirect damages.
- In addition to sending back the warranty card, consumers also need to keep the original purchase voucher, in order to obtain the warranty rights. If you do not have proof of the original purchase date, the purchase date on this warranty card is the production date.

